



# **Modeling Crustal Structures of Southern Nigeria Basins from Aeromagnetic Data: Implication on Hydrocarbon Prospectivity**

**D. A. Obi<sup>1\*</sup> and A. M. George<sup>2</sup>**

<sup>1</sup>*Department of Geology, University of Calabar, Nigeria.*

<sup>2</sup>*Department of Physics, University of Calabar, Nigeria.*

## **Authors' contributions**

*This work was carried out in collaboration between us. Author DAO acquired the data and the software packages, he also processed the data and took part in the interpretations. Author AMG took part in the data processing and interpretation, he also proofread the manuscripts. Both authors read and approved the final manuscript.*

## **Article Information**

DOI: 10.9734/CJAST/2018/39330

### Editor(s):

- (1) Fazel Khaleghi, Assistant Professor, Geology Department, Azad University, Iran.
- (2) Ahmed Fawzy Yousef, Associate Professor, Department of Geology, Desert Research Center, Egypt.
- (3) Meng Ma, Associate Professor, Anhui University, Hefei, Anhui, China and Icahn Institute for Genomics and Multiscale Biology, Icahn School of Medicine at Mount Sinai, New York, USA.

### Reviewers:

- (1) Obiekea Kenneth Nnamdi, Ahmadu Bello University Zaria, Kaduna, Nigeria.
- (2) Jude Steven Ejepu, Federal University of Technology, Nigeria.
- (3) José Martínez Reyes, University of the Ciénega of Michoacán State, México.

Complete Peer review History: <http://www.sciencedomain.org/review-history/23828>

**Original Research Article**

**Received 4<sup>th</sup> January 2018**

**Accepted 9<sup>th</sup> March 2018**

**Published 26<sup>th</sup> March 2018**

## **ABSTRACT**

Aeromagnetic data has been used by many authors worldwide in evaluation of subsurface basin configuration. This study covers parts of five basins (Niger Delta, Calabar Flank, Anambra Basin, Mamfe Basin, and Lower Benue Trough) in Nigeria. The study utilized twenty aeromagnetic maps on a scale of 1:100,000. The maps were digitized manually along flight lines and a total of 16,689 data points obtained. The data was processed using computer techniques including map merging, reduction to pole, polynomial and power spectrum filtering for residual and regional anomaly separation, and forward and inverse 2.5D Saki modeling. Results obtained from power spectrum depth analysis indicate depth to magnetic sources vis – a – vis sediment thickness from the Niger Delta area (2.75 km - 3.75 km), Anambra basin (1.5 km – 2.6 km), Calabar Flank (1.3 km – 2.3 km), Mamfe basin (2.0 km – 3.4 km), and Lower Benue Trough (1.5 km – 3.2 km). Also, depth to

\*Corresponding author: E-mail: dominic\_odu@yahoo.com;

basement results from forward and inverse modeling indicate the Niger Delta has thickness of sediments ranging between 1.0 km- 8.0 km, Anambra basin (1.4 km – 2.7 km), Calabar Flank (0.8 km- 2.5 km), Mamfe Basin (1.0 km – 2.7 km), and Lower Benue Trough (1.4 km – 2.7 km). Also, results from modeled number of intrusives indicate that the Calabar Flank has five intrusives, Niger Delta has four intrusives, Mamfe basin has six intrusives, Anambra basin has five intrusives, and Lower Benue Trough has four intrusives. The implications of the increased number of intrusives are that generated hydrocarbons might be converted to gas, this is more likely in areas around Calabar Flank, Mamfe basin and Anambra basins, given the high number of occurrence of intrusives within these areas. Whereas areas around the Niger Delta and Lower Benue Trough with significantly increased depth and lower number of intrusive are less prone to excessive heat from the intrusive and may produce more oil. The study support further exploration activities within the Niger Delta and Lower Benue Trough areas.

*Keywords: Configuration; intrusives; power spectrum; aeromagnetics; basement.*

## 1. INTRODUCTION

Southern Nigeria has major and minor sedimentary basins. This study covers parts of 5 sedimentary basins in southern Nigeria, this includes the Niger Delta, Benue Trough, Calabar Flank, Mamfe basin and Lower Benue Trough. The area is located within latitude 4° 0' 00" – 7° 0' 00" N and longitude 7° 0' 00" – 9° 0' 00" E. The studied Sedimentary basins are flanked by the exposed basement rocks which extend towards Cameroon (Oban Massif and Afi Mountains). Previous work done by earlier researchers using magnetic method was done using limited local data which was not possible to correlate regional features across different basins [1,2,3,4,5].

This study will emphasize comparing the regional implications of different subsurface modeling of basinal configurations and possible effects of tectonic activities affecting hydrocarbons emplacements within these basins.

## 2. GEOLOGY OF THE STUDY AREA

The study area covers parts of Southeast and South-south States in Nigeria. The area extends from the Niger Delta cutting across Calabar Flank Sedimentary basin and extending towards the Lower Benue Trough, passing through the Anambra basin and Mamfe basins. Geologically, the evolution of the Benue Trough gave rise to other basins; it is a Cretaceous basin and the oldest basin in Nigeria [6,7,8,9]. The Benue Trough was formed from the opening of the Benue rift system in the Mesozoic when the South American plate drifted away from the African plate thus creating a triple junction. The events that lead to the formation of the formation of the Calabar Flank Sedimentary basin is well documented in Olade1975, Burke et al. 1972.

The Calabar Flank also is known as part of the Lower Benue Trough is made of mainly Cretaceous deposits. A series of tectonic episodes characterized the formation of the Cretaceous Benue Trough (Albian – Tertiary). The Awi Formation is sitting directly on the Oban Massif basement rocks, the formation has sequences of transgressive and regressive cycles of sedimentary deposits of Sandstones, Shales and Carbonates. Also sitting on the Afi Mountain basement rocks is the cyclic deposits of Eze- Aku, and Agwu formations, these formations cover parts of Mamfe basin and the Lower Benue Trough (Fig. 1). Sediments deposition within the Benue Trough was controlled by different episodes of transgressive and regressive controlled by different tectonic episodes which lead to the emplacement of Afikpo Syncline and the Abakaliki Anticlinorium [10,8]. The Afikpo and Nkalagu areas witness deposition of Eze-Aku, Agwu, Mamu, Ajali, and Nsuka Formations. The area has Basaltic intrusions which provided the intense heat which characterize the Benue Trough and Anambra basins. Sedimentation patterns within the Anambra basin latter developed the Niger Delta basin formed as a result of basin subsidence from gravity wedgedeposits slopping downwards along ancient sutured fractured zones growth (faults). Stratigraphically, the Niger Delta has three formations, the topmost Tertiary Benin Formation, followed by the middle Agbada and Akata Formations. The Benin Formation are mainly sandstones, the Agbada Formation has mainly alternation of Sandstones and Shales forming the major exploration targets, while the Akata Formation is mainly made of shales. The geologic map in this study area display only the top tertiary Benin Sandstones Formation (Fig. 1).

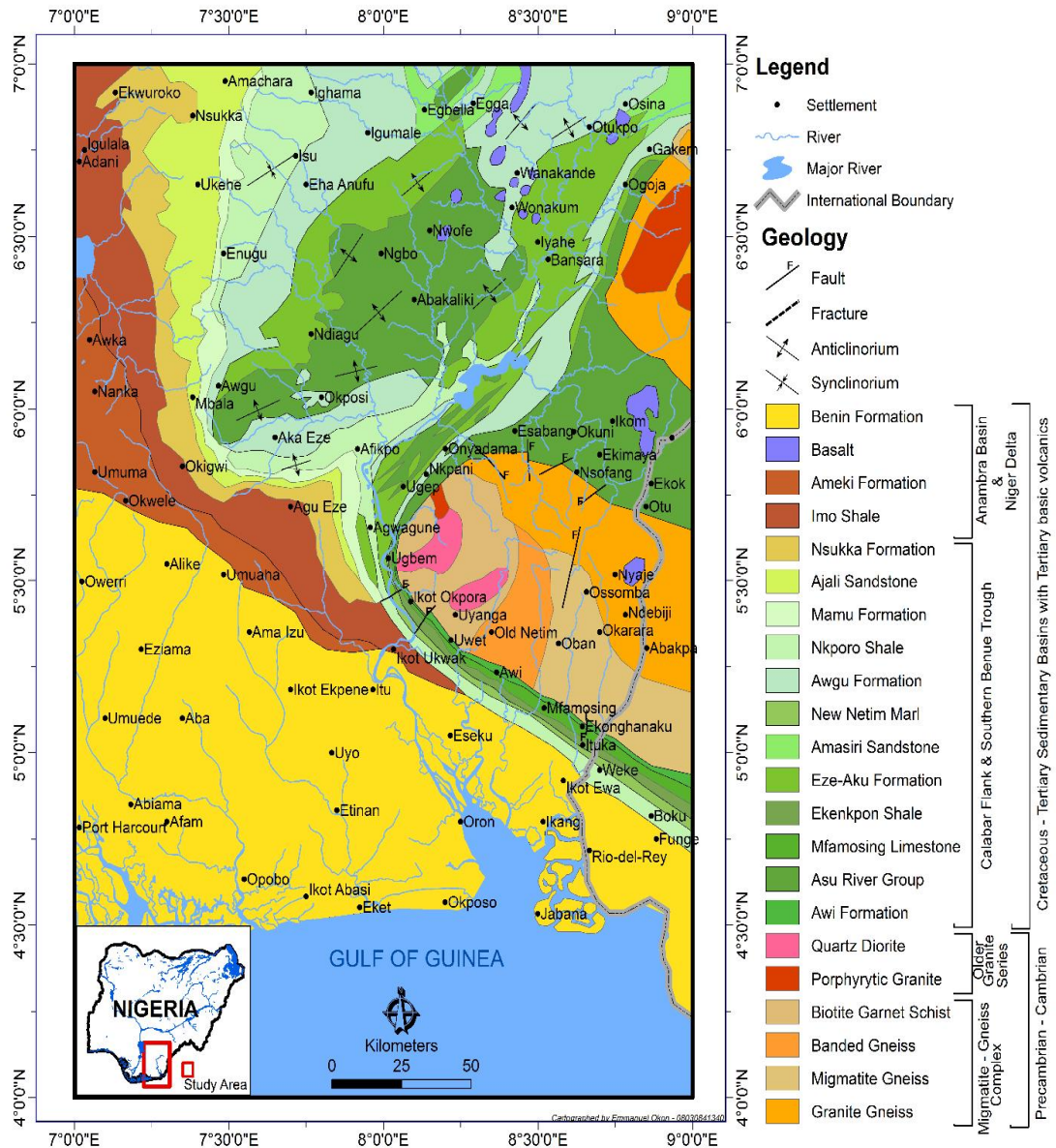


Fig. 1. Geologic map of the study area. (Digitized from Geologic map of Nigeria NGS 2010)

### 3. METHODS OF STUDY / DATA ANALYSIS

Twenty aeromagnetic maps on a scale of 1: 100,000 were acquired from Nigerian Geological Survey Agency Kaduna. The maps were digitized manually along flight lines at 1.0 km intervals and a total of 16,689 data points were obtained for further processing. The processed data points were stored in a folder and used as input file in a batch of computer software programs (potential field version 2.2) acquired from the United States

Geological Survey (U.S.G.S). The digitized magnetic data were merged and contoured using Surfer 9.0 Software to obtain the colored merged Total Magnetic Total Intensity field map of the study area (Fig. 2). Further processing was done using the batch U.S.G.S. Software Programs. [11] which include ADDGRD, JMARGER, DETOUR, A2XYZ, GEOCON, CK\_DIMS, PLUGGRD, FFTFIL, F\_RTP, PREP5, DEPREP5 to produce the reduction to – pole map (Fig. 3).

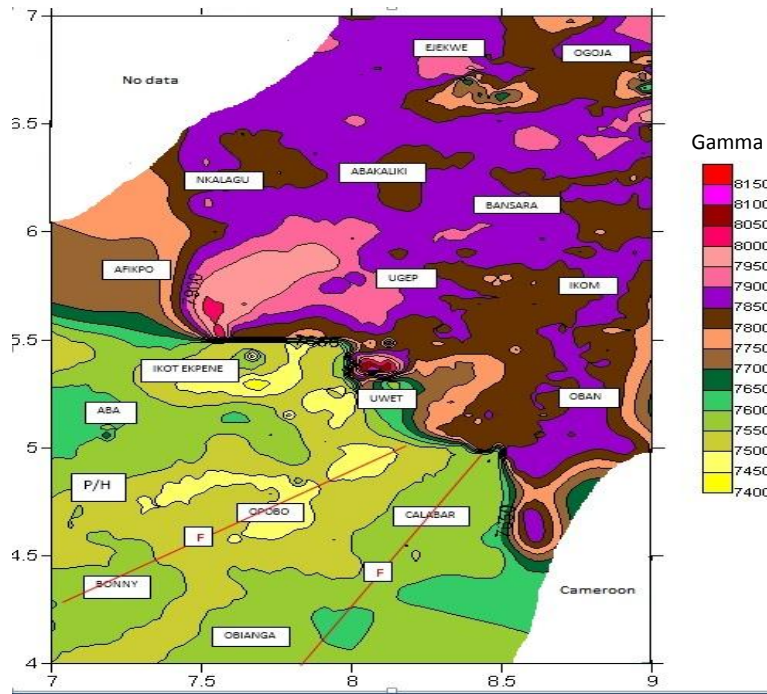


Fig. 2. Total Magnetic Field Intensity Map (Contoured at 50nT)

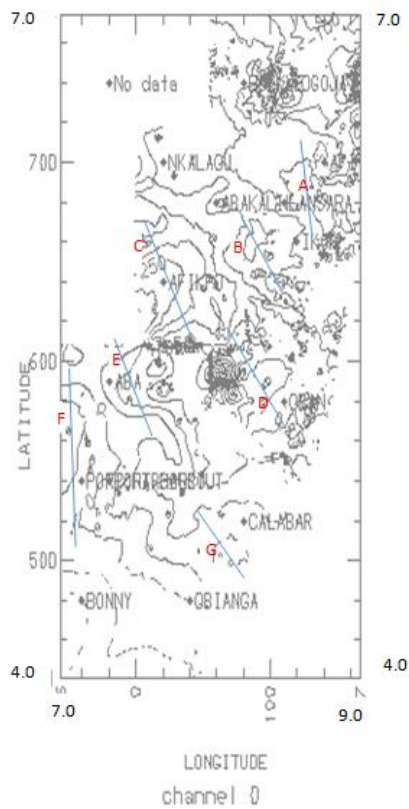
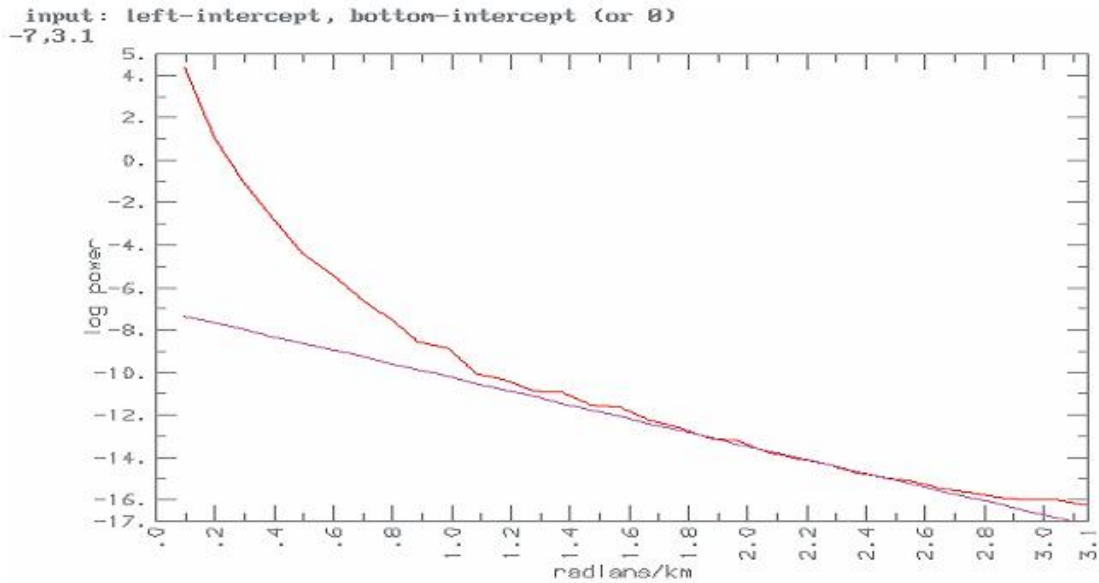
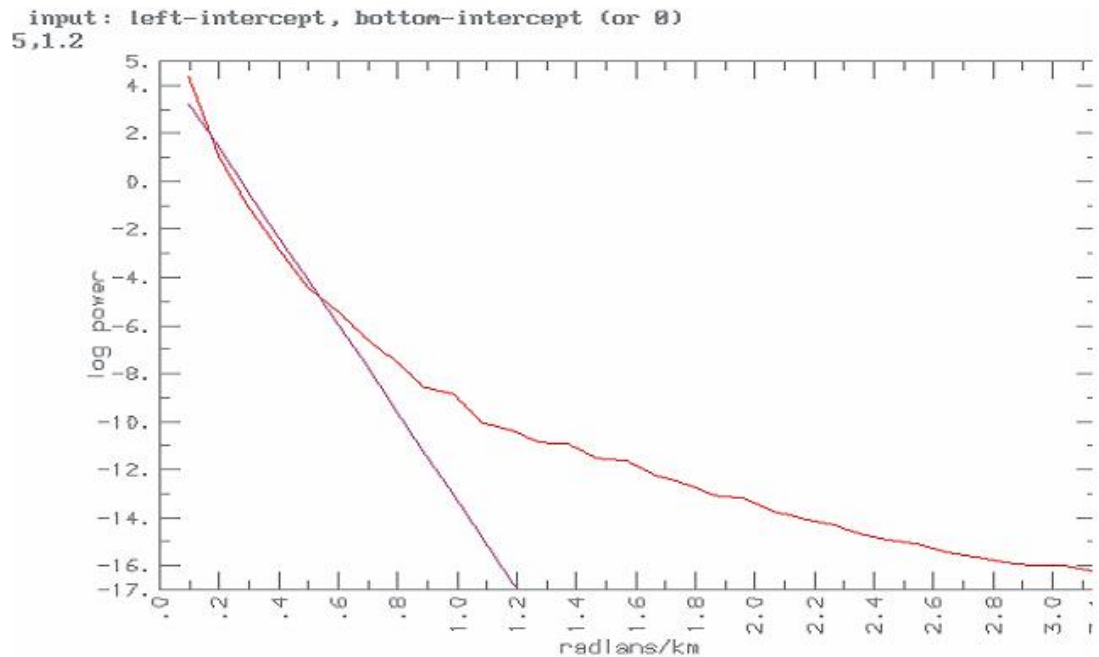


Fig. 3. Reduced to pole polynomial residual map of the Study area (contoured at 50nT showing positions of modeled profiles)



**Fig. 4. Processed spectral analysis depth of layer (1) one of Ugep block**



**Fig. 5. Processed spectral analysis depth of layer (2) of Ugep block**

The data were subjected to anomaly separation using a software program (SURFIT) to produce the residual magnetic map of the study area (Fig. 3). The residual grid file was gridded into twenty blocks and used in several software programs (MFINIT, MFFILTER, MFDESGN ) in computing the depth to the magnetic basement [12,13,14]. The results as displayed in Figs. 4 and 5 as log

power and radians/km plots indicating different depth layers as layer 1 and layers 2 where layer 1 indicate shallow depths to magnetic basement vis- a- vis sediments thickness in the top layer and layer 2 indicate deeper magnetic sources representing basement depths [13,15,14]. The results of each depth point in each block were considered during forwarding and inverse

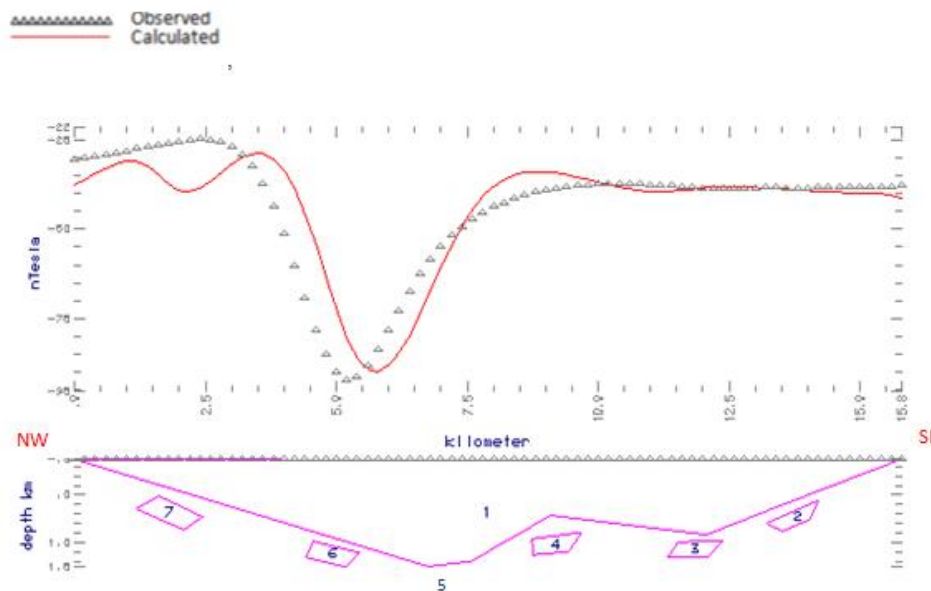


modeling. Forward modeling was done using P-DEPTH software where a magnetic profile line was extracted with the aid of PROFILE-X software creating an input file used for the forward modeling. Seven profiles were chosen along prominent anomalies perpendicular to the anomalies regional trends and Several input parameters used in the modeling, which include total magnetic field, profile azimuth, inclination, declination, minimum and maximum longitude and latitude, and the number of bodies, the program runs to produce a modeled file eg. Obi.mod which is then used for the inverse modeling. The Saki software program uses the output of the forward modeled file as its input file and performs several mathematical iterations to produce the best fit curve or match between an observed plotted magnetic field curve and a calculated generated curve with a minimal percentage error to about 5% [11]. The results of the forward and inverse modeling are presented in Table 1 and Figs. 6, 7, 8, 9, 10, 11 and 12.

#### 4. DISCUSSION OF RESULTS

The total magnetic field intensity map (Fig. 2) has two prominent anomalies marked as “FF” cutting through Obianga, Calabar, Bonny towards Opo. These anomalies represent the well established ancient suture zones of the Chain and Charcourt fracture lines.

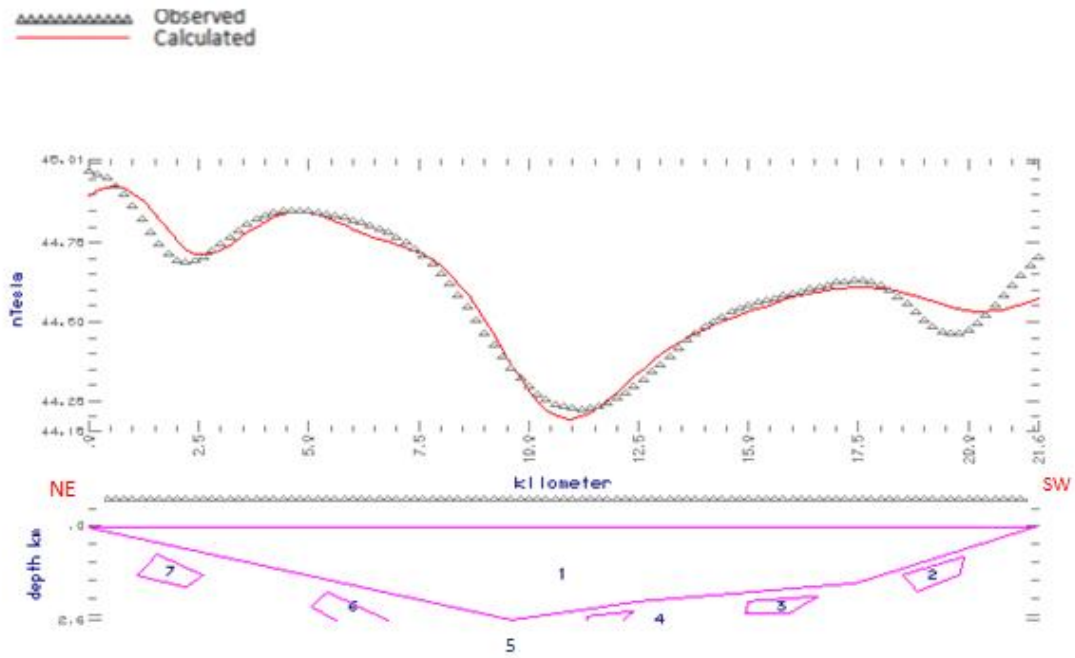
Seven profiles were selected along prominent anomalies from the reduced to pole residual contoured map (Fig. 3) and used for forward and inverse modeling, the results reveal Horst and Graben structures. Also, the identified number of intrusive occurrences serves as a guide to the amount of geothermal temperatures associated with these basins. Three profiles E, F, and G cut across the Niger Delta basin (Figs. 10, 11, 12), sediments thickness is greatest along profile F, Portharcourt towards Bonny (3.0 km - 8.0 km) with a profile length of 10.0 km – 15.0 km. Profile E is along Aba – Ikot Ekpene with depths between 2.0 km- 2.5 km, while profile G is along Calabar - Uwet, with depth ranging between 2.5 km – 3.5 km. Basin depth decreases from Niger Delta towards the Calabar Flank sedimentary basin and towards the Lower Benue Trough, this is evidence in profiles A, and D where profile D runs across the Calabar Flank towards the Lower Benue Trough with depth ranging between 1.7 km – 2.6 km and profile A run across the Mamfe basin towards the Lower Benue Trough with depth ranging from 1.8 km – 2.6 km. Also, two profile B and C run across the Anambra basin and the Lower Benue Trough, where profile B run across Abakaliki towards Ugep with depth ranging from 1.7 km – 2.1 km, and profile C run across Afikpo towards Nkalagu with depth ranging from 1.7 km – 2.7 km.



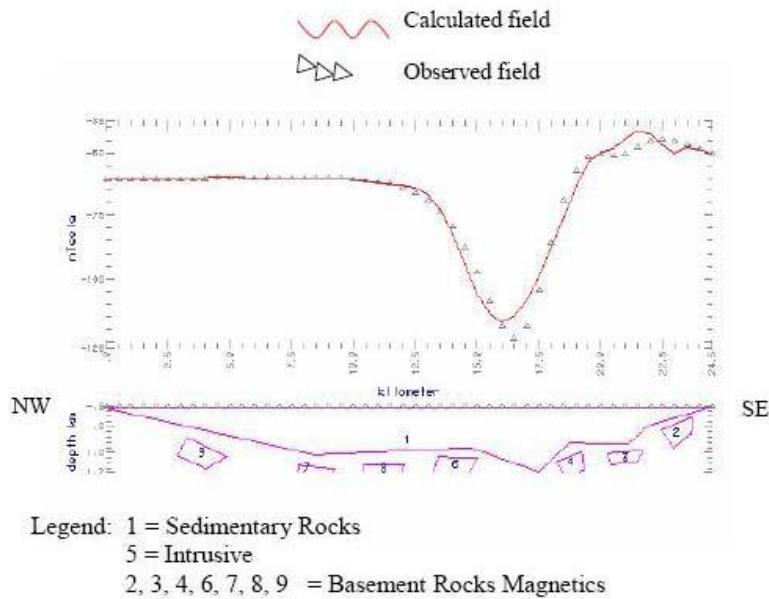
**Fig. 6. Modeled Forward and Inverse Profile (A) along Ikom towards Edor**  
 Legend: Sedimentary rocks = 1, Intrusives= 5,6, Basement rocks = 2,3,4,7

**Table 1. Results of Saki modeled profiles from forward and inverse modeling**

<b>Profiles/ Towns</b>	<b>No of intrusives</b>	<b>Magnetic susceptibilities of intrusives</b>	<b>Rms%</b>	<b>Average shallow depth of sediments(km) thickness</b>	<b>Estimated distances from profiles(km)</b>	<b>Average Maximum depth of basin sediments (km)</b>	<b>Estimated distances from profiles (km)</b>	<b>Basin exploration prospects</b>
A (Ikom –Edor)	2	0.0055 0.0035	1.2	0.5 – 1.4	15.0	1.4 – 1.8	4.5	Poor (Mamfe basin)
B (Bansar –Ikom)	2	0.005 0.0025	1.0	0.5 -1.0	15.0	1.0 – 2.6	7.5	Good (Mamfe basin)
C (AfikpoNkalagu)	1	0.005	1.85	0.5 -1.0	14.0	1.0 -1.7	7.5	Poor (Anambra Basin)
D (Ugep – Oban)	1	0.0025	1.2	0.5 -1.4	15.0	1.4 – 1.7	20.0	Poor ( Lower Benue towards Oban massif)
E (IkotEkpene – Uwet)	2	0.0025 0.0025	1.75	0.5 – 1.5	3.5	1.5 -2.7	12.0	Good ( Calabar Flank)
F (Portharcourt – Bonny)	2	0.0085 0.0020	1.75	1.0 – 2.5	14.0	2.5 – 8.0	15.0	Very Good (Niger Delta)
G (Calabar – Uwet )	3	0.0015 0.0025 0.0035	1.85	0.5 -1.5	3.5 -	1.5 – 2.3	12.5	Good (Calabar Flank)



**Fig. 7. Modeled Forward and Inverse Profile (B) along Bansara towards Ikom**  
 Legend: Sedimentary rocks = 1, Intrusives= 2,4,5, Basement rocks = 3,6,7

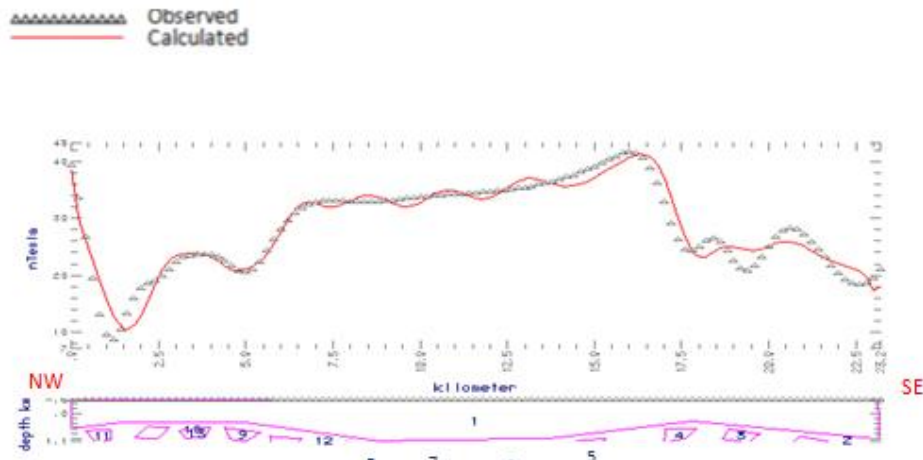


**Fig. 8. Modeled Forward and Inverse Profile (C) along Afikpo towards Nkalagu**

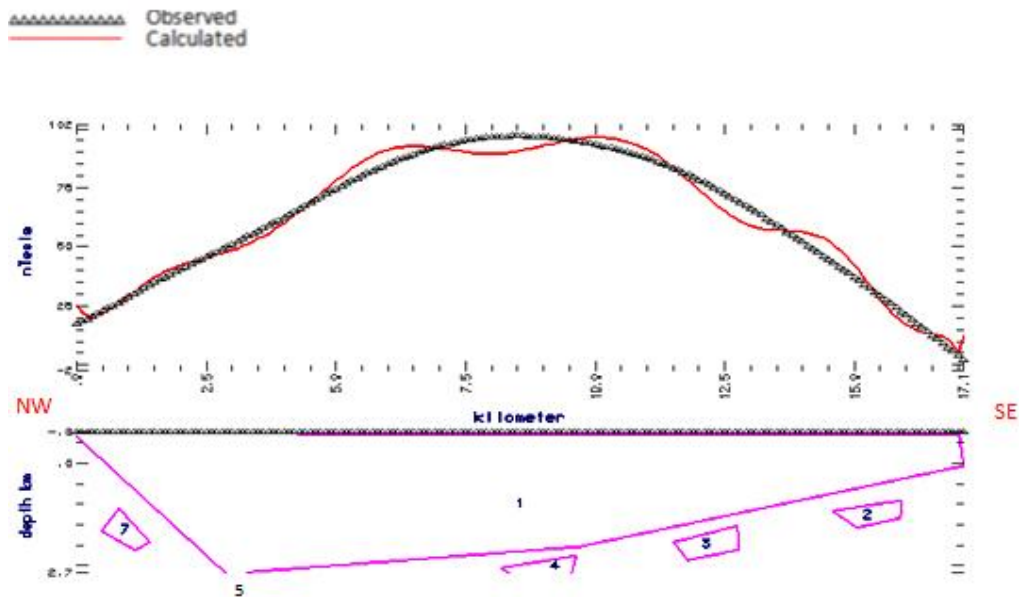
During modeling, several parameters were used to evaluate the presence or absence of intrusive rock within the study area, this was necessary to evaluate the possible geothermal history of the

various basin and their possible effects on the hydrocarbon generating potentials. The areas with the abundant occurrence of intrusives are likely to be non-hydrocarbon productive areas





**Fig. 9. Modeled Forward and Inverse Profile (D) along Ugep towards Oban**  
 Legend: Sedimentary rocks = 1, Intrusives= 5, Basement rocks = 2,3,4,6,7,8,9,10,11,12



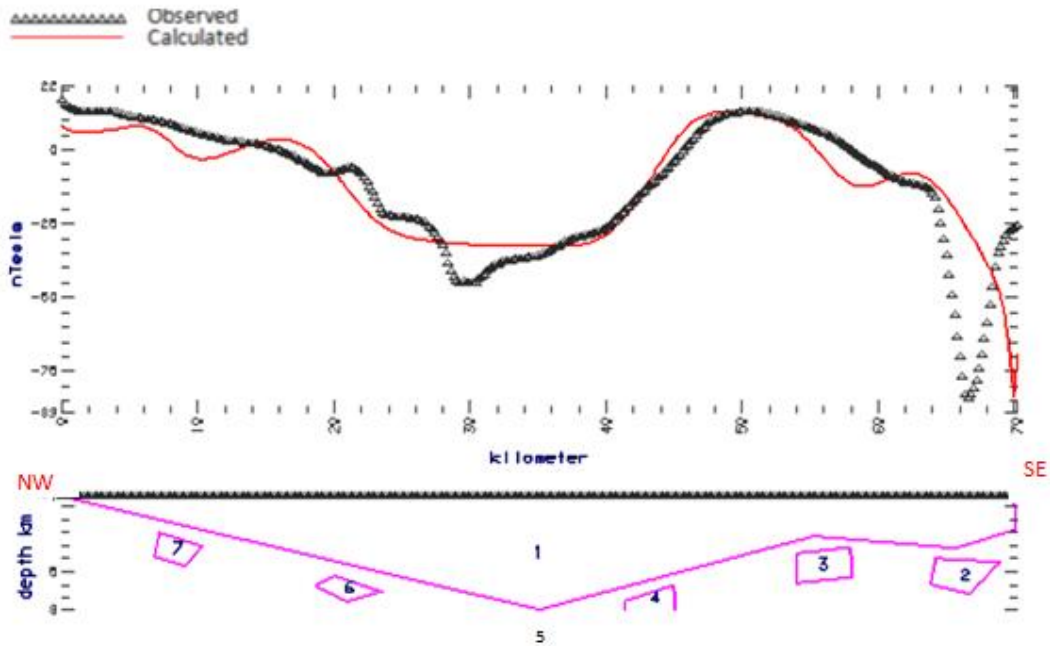
**Fig. 10. Forward and Inverse Modeled Profile (E) along Aba towards Ikot Ekpene**  
 Legend: 1= Sedimentary Rocks, 3,4,5,6,8 = Basement rocks magnetics, 2,7 = Intrabasement Intrusive

while those areas with less no of intrusives could possibly be areas where the source rock attained thermal maturity. These intrusive were recognized using susceptibility of 0.000005 for Sedimentary rocks, 0.0025 – 0.0050 - for Rhyolites, and 0.025 – 0.050 for Basalts. The areas close to the Oban massif around Uwet, Ikot-ekpene, and Calabar are more prone to an increased number of intrusive, also, the environs of Afi mountains around Ikom, and Bansara has an increased number of intrusives both areas has over twelve major intrusives, other areas

around the Niger Delta, Anambra basin, and Lower Benue Trough has lower number of intrusives (Table 1). Generally, the Niger Delta area which includes part of the Calabar Flank Sedimentary basin has intense ongoing hydrocarbon exploration activities, the study reveals high numbers of intrusives along Uwet, Ikot-ekpene, and Calabar axis these areas are less prone to hydrocarbon generation as the effects of these intrusives may over convert formed oil to gas. The Mamfe basin though has good sediments thickness of hydrocarbon

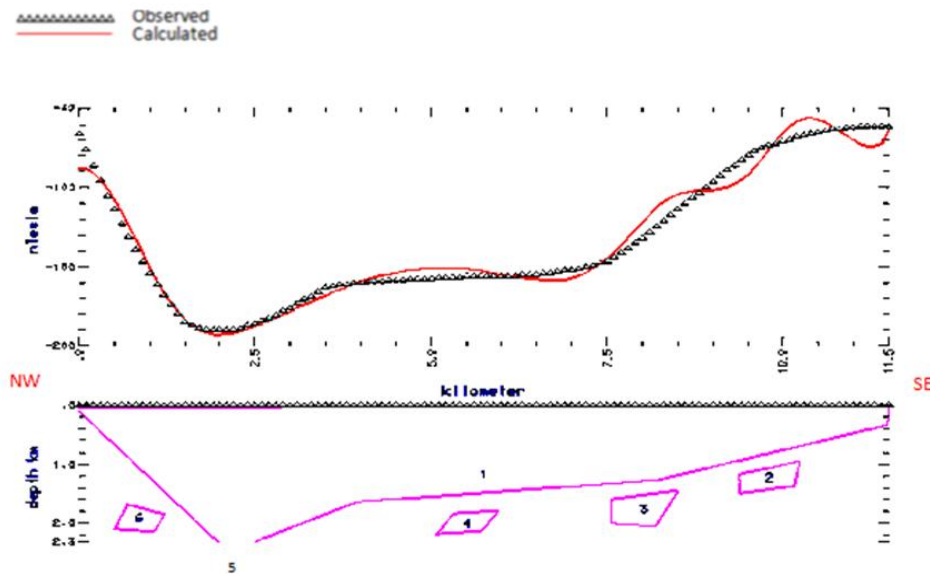
generation have many intrusives that may render the basin gas prone. The Niger Delta with a low number of intrusives and great depth of sediments thickness (8.0 km) has good potentials for oil generation. Also, the Lower

Benue Trough and Anambra basins are similar in moderate depth of sediments thickness (2.5 km) with a fewer occurrence of intrusive, these make them fairly good prospecting basins for hydrocarbon exploration.



**Fig. 11. Forward and Inverse Modeled Profile (F) Along Port Harcourt**

Legend: 1= Sedimentary Rocks, 3,4,6,7,8 = basement rocks magnetics, 2,5 = Intrabasement Intrusive of basaltic



**Fig. 12. Forward and Inverse Modeled Profile (G) Along Calabar toward Uwet**

Legend: 1 = Sedimentary Rocks, 2,6 = basement rocks magnetic, 3,4, 5 = Intrabasement Intrusive

## 5. CONCLUSION

The significance of this study is the wide range appraisal of the basin architecture and configuration of the offshore and inland basins in Southern Nigeria. The Niger Delta basin areas of Portharcourt, Bonny with sediment thickness of about 8.0km and less occurrence of intrusives has the highest hydrocarbons exploration potentials. The Bansara area within the Mamfe basin has (2.6 km) sediment thickness that could generate hydrocarbons given that another condition is favourable, but the presence of numerous intrusives may make the area prone to excessive heat and may produce more gas than oil. The Anambra basin and the Lower Benue Trough have a moderate depth of sediments thickness(2.5km) and less number of intrusives, these areas came second to the Niger Delta among the studied basins for good prospects in hydrocarbon exploration investigations.

In conclusion, this study reveals the order of preference of the choice of investigating the hydrocarbon prospective potentials of Southern Nigerian basins using the potential field magnetic method, it is recommended that other geophysical methods such as gravity, and seismic be used to identify possible hydrocarbon habitats within the Southern Nigeria Basins.

## COMPETING INTERESTS

Authors have declared that no competing interests exist.

## REFERENCES

1. Ako BD, Ojo SB, Okereke CS, Fieberg FO, Ajayi TR, Adepelum AA, Afolayan JF. Observation from gravity / magnetic data interpretation of the Niger Delta. Nigeria Association of Petroleum Exploration's Bulletin. 2014;13(1):50–69.
2. Obi DA, Obi EO, Okiwelu AA. Basinal configuration and intra-sediment intrusive as revealed by aeromagnetic data of South East Sector of Mamfe basin, Nigeria. Journal of applied Geology and Geophysics. 2013; 1(2):1-8.
3. Obi DA, Okereke CS, Egeh EU, Olagundoye OO. Aeromagnetic modeling in evaluating the hydrocarbon potentials of the basement of the Calabar Flank, South Eastern Nigeria. Journal of mining and Geology. 2008;44(2):151-160.
4. Ofoegbu CO. Analysis of magnetic data over the Abakaliki Anticlinorium of the Lower Benue trough Nigeria. Geophysics J. R Astronsoc. 1991;79:813-823.
5. Okiwelu AA, Okwueze EE, Udje IA. 3D Basement tectonic of the Niger Delta basin from aeromagnetic data. Intect Open Access Publishers; 2012.
6. Edet JJ, Nyong EE. Depositional environments, sea level history and paleogeography of the late campanian – maastrichian on the Calabar Flank, S. E. Nigeria. Paleoclimatology. 2005;102:161-175.
7. Essien NU, Ukpabio EJ, Nyong EE, Ibe KK. Preliminary organic geochemistry appraisal of Cretaceous rock units in the Calabar Flank, Southern Nigeria. Journal of mining and Geology. 2005;41: 185–191.
8. Olade MA. Evolution of Nigeria Benue Trough (Aulacogen): A tectonic model, Geological Magazine. 1975;112:575-583.
9. Reijers TJD. Sequence stratigraphy based on micro facies analysis of Mfamosing limestones Calabar Flank, Nigeria. Geologic en Miboun. 1996;76:197-215.
10. Burke K, Dessauvagie TE, Whiteman C. Opening of the gulf of guinea and geological history of Benue depression and Niger Delta. Nature Physical Sciences. 1971;233:51–55.
11. Phillips JD. Potential field geophysics software for the pc, version 2.2. U.S Geological Survey Open file Report. 1997;97-725:1-32.
12. Blakely RJ, Simpson RW. Approximating edges of source bodies from magnetic and gravity anomalies. Geophysics. 1986; 51(7):1194–1498.
13. Hahn A, Kind EG, Mishra DC. Depth estimation of magnetic sources by means of Fourier amplitude spectra. Geophysical Prospecting. 1976;24:287-308.

14. Webring M, Minc A. A gridding programme based on minimum curvature U.S. Geological Survey Open File Report. 1985; 81-1224:1-41.
15. Naidu PS. Fourier transform of large scale aeromagnetic field using a modified version of fast Fourier transforms. Geophysics. 1970;81:17-25.

---

© 2018 Obi and George; This is an Open Access article distributed under the terms of the Creative Commons Attribution License (<http://creativecommons.org/licenses/by/4.0>), which permits unrestricted use, distribution, and reproduction in any medium, provided the original work is properly cited.

*Peer-review history:*  
*The peer review history for this paper can be accessed here:*  
<http://www.sciencedomain.org/review-history/23828>